

Dmitri Shostakovich
2nd Waltz

parts by Sandor Hendriks & Roger Niese



2nd Waltz

from *Jazz-suite no.2*

D. Shostakovich

parts by
Sandor Hendriks
& Roger Niese

Waltz

1 2

3

4

5

6 7

8

9

10

p

mf

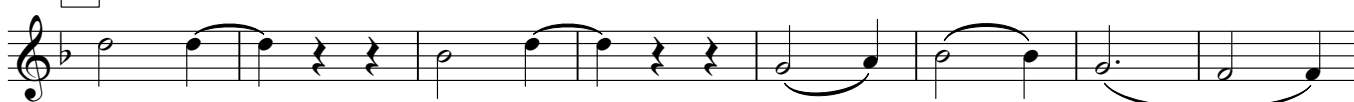
11



12



13



14



15



16

17

18



19



20

21

22

23

f

p

Detailed description: This image shows five staves of musical notation for a 2nd Waltz. The first staff (measures 20-21) begins with a dynamic marking of *f* and features a rhythmic pattern of quarter notes with eighth rests. The second staff (measures 21-22) continues this pattern. The third staff (measures 22-23) features a melodic line with a long slur over measures 22 and 23, containing dotted half notes and quarter notes. The fourth staff (measures 23-24) starts with a dynamic marking of *p* and contains a sequence of chords and dyads. The fifth staff (measures 24-25) continues the chordal sequence and ends with a double bar line.